

SOUTH HAMS DISTRICT COUNCIL

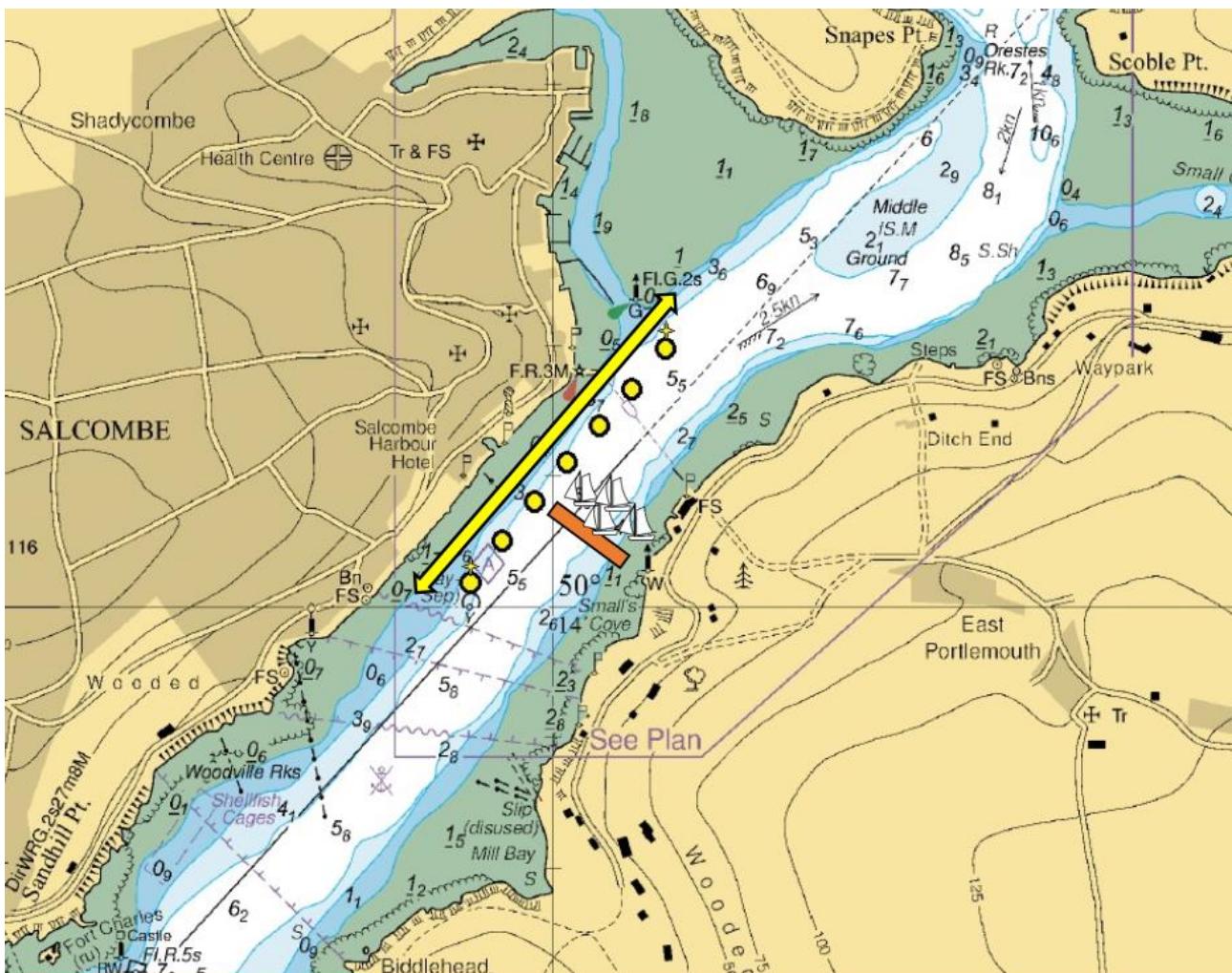
SALCOMBE HARBOUR – KINGSBRIDGE ESTUARY

LOCAL NOTICE TO MARINERS NO 02 OF 2020

RACING DINGHY FREE FAIRWAY

To reduce the risk of collision within Salcombe Harbour during dinghy racing, a Racing Dinghy Free Fairway will be implemented as detailed below. Generally this will be used to facilitate Saturday afternoon race starts and those within the August Regatta programmes but may be used whenever an event requires vessel traffic management :

1. The Harbour Authority will establish a temporary fairway along the western shore of the harbour during dinghy racing. This temporary fairway is for vessels entering and leaving the harbour (yellow arrow). Dinghies involved in racing must keep clear of this fairway but will potentially block the remaining width of the channel on the start line (orange line).
2. The fairway's limits will be $50^{\circ}14'.01N$ $003^{\circ}46'.02W$ to $50^{\circ}14'.2N$ $003^{\circ}45'.8W$ and its northern to southern limits marked by yellow buoys with X top mark.



3. The Harbour Authority will broadcast the fairway's establishment on VHF#14 and a yellow flashing light will illuminate on each side of the Salcombe Yacht Club watch house (50°14'.12N 003°46'.52W).
4. The racing dinghy free fairway will be established from at least five minutes before the start of the first race start until at least five minutes after the start of the last race, but may be kept in force for longer if traffic density dictates.
5. The racing dinghy free fairway will not be established two hours either side of low water when the predicted tidal height at low water is less than 1m. On such occasions when the harbour is busy and there are a large number of dinghies racing, Salcombe Yacht Club will either reschedule the race start or use a committee boat start.
6. The racing dinghy free fairway will not be shortened.

Cancel this LNTM 31 December 2020

C Sims-Stirling
Salcombe Harbour Master

Harbour Office
Whitestrاند
SALCOMBE
Devon
TQ8 8BU

1st January 2020